

PROFESSIONAL LIGHTING



# MAGNOLUX

1200 | 2400 | 3600

STUDIO FLASH GENERATORS

MADE IN GERMANY



- + FAST
- + VERSATILE
- + FLEXIBLE

**Multiblitz**

**+ PROFESSIONAL LIGHTING**

**MAGNOLUX**  
1200 | 2400 | 3600

## WITH LATEST GENERATION MICROPROCESSORS

With the stability, reliability and longevity of all Multiblitz equipment.

Safe, fast and precise operation due to special flash plugs and illuminated function switches. Compatibility with other Multiblitz generators and studio monoblocs gives access to a highly versatile flash system.

## MAGNOLUX FACTS

- + Extremely uniform output – perfect for digital photography.
  - + Minimum recycling time 0.4 s (MALUX-12).
  - + Stable color temperature.
  - + Continuously variable output of each channel for a multitude of asymmetric options, five f-stops per channel. Reduction of output without firing.
  - + Symmetric and asymmetric output.
  - + Digital displays in 1/10 f-stop increments for each channel.
  - + Large illuminated controls ensuring easy operation even in a dark studio. Green LED display.
- New:**
- + With integral 16 channel radio receiver (RADIO SLAVE)
  - + Interface for LUXREM-R radio receiver
  - + All functions of the MAGNOLUX system are also controllable from a Mac or PC via the MB-STUDIO software in conjunction with the LUXREM-RT radio remote control system.

**Multiblitz**

LUXREM-RT  
Radio remote control



## IDEAL FOR DIGITAL PHOTOGRAPHY.

The Multiblitz line of light-forming tools with V-type bayonet mount. Your guarantee for boundless creativity.



### 1 RING FLASH

Up to 1200 Ws, with interchangeable reflectors. Suitable for all types of camera. Sophisticated fashion and people photography with portrait reflector and diffusion screen. Precise product shots and close-ups with standard reflector. Rugged camera bracket with quick-release plate.



### 2 FRESNEL-LENS SPOTLIGHT

With 2000 Ws., 150 mm Ø and 4000 Ws., 250 mm Ø step lenses for strong directed light. Wide focusing range. Blazing light for harsh shadows.

### 3 OCTOBOXES

Octagonal softboxes fitting for the MALAX flash heads (V-bayonet). With 120 cm Ø, 150 cm Ø, 213 cm Ø and 254 cm Ø, ideal for soft light control. Second interior diffusion screen for contrast control.

„Enlighten“ yourself and visit us at [www.multiblitz.de](http://www.multiblitz.de)

## SOFTBOXES FOR SOPHISTICATED LIGHTING



RIREC 60/80, 60 x 100 / 80 x 140 cm  
 PROTUR, für RIREC 60  
 RECWAN 60/80, 60 x 100 / 80 x 140 cm



RIFEX 80/110, 75 x 75 / 110 x 110 cm  
 RITUR 80/110, 75 x 75 / 110 x 110 cm  
 FEXWAN 80/110, 75 x 75 / 110 x 110 cm



LUFEX 65, 65 x 65 cm



RIRIP 30, 30 x 140 cm  
 RECWAN 30, 30 x 140 cm

MUSEN  
 IR Flash trigger



RADIO SLAVE RS<sup>2</sup>



MADE IN GERMANY



# PROFESSIONAL STUDIO ACCESSORIES

## NO MORE OBSTACLES.

The Mac and PC compatible wireless remote for professionals:  
Control your units, store your projects, move freely...

You Are you tired of cable-kinks and signal interference from infrared remote controls? The perfect solution: The Multiblitz wireless remote control. Walls, corners, partitions - obstacles that may cause conventional infrared remotes to give less than satisfactory performance.

The LUXREM-RT wireless remote control system, however, is not thrown off guard by this type of obstacles, its functionality and power are so convincing you'll never want to go without it any more.

Utilizing a USB interface, the LUXREM wireless remote can also be connected to either a Mac or PC. The supplied MB-STUDIO SOFTWARE gives access to all of MAGNOLUX' functions by simply controlling them in real time from your desktop computer. Important projects and complex settings can easily be stored and recalled at any time.



LUXREM-R LUXREM-T



MB-STUDIO Software

### OCTOBOXES

RIFOC 120, 120 cm Ø  
RIFOC 150, 150 cm Ø  
RIFOC 213, 213 cm Ø  
RIFOC 254, 254 cm Ø

### LIGHT BOXES

Deal light sources for small product shots. With straight flash tubes and modeling light. No vignetting. For loads up to 4000 Ws. Sizes 20 x 30 cm and 30 x 40 cm. Including joint and tripod mount.



**Soft disks**  
Heat-resistant, for RISOF-2 / RISOF-3 standard reflectors

**Barn doors**  
For standard reflectors; integral filter holder, four doors  
RISAB-24 / RISAB-34

**Honeycomb reflector**  
65°, 18cm Ø, LUNOS

**Standard reflector**  
65°, 50° silver or white reflecting surface  
RINOS-2 / RINOW-2  
RINOS-3 / RINOW-3

**Honeycomb filters**  
Various sizes (Small, medium, large)  
RIWAN-2S, M, L  
RIWAN-3S, M, L

**Umbrella reflectors**  
White (80 cm dia.) or silvery white, reversible (110 cm dia.)  
VARES / VAREU

**Fresnel attachment**  
With integral iris diaphragm  
RASTU

**Snoot**  
With honeycomb insert  
STUSCH + RIBUS

**Background reflector**  
Bevelled, with filter holder  
RIVER

**Soft-light reflector**  
White, with counterreflector  
RIWEW

**Lightball**  
360° surround light  
RIGLOB

**Narrow-beam reflector**  
35°, RIENG

**Wide-angle reflector**  
120°, RIWEI

**Beauty reflector**  
for people-, fashion und beauty-photography  
Ø 44 cm  
Honeycomb reflector  
Ø 13 cm  
RIBEAU



# THE PANEL

## Total Control

- 1 ON/OFF master switch
- 2 Halogen ON/OFF
- 3 Halogen 100% ON/OFF
- 4 Channel I output control
- 5 Channel I display
- 6 Channel I output control
- 7 Channel II display
- 8 Open-flash/test button
- 9 Acoustic signal ON/OFF
- 10 Optical firing monitor ON/OFF
- 11 Slave cell ON/OFF
- 12 Slave cell
- 13 Generator handle
- 14 Connector for antenna of integral RADIOSLAVE receiver
- 15 Sync terminals IN + THRU
- 16 Automatic circuit break
- 17 Power socket
- 18 Flash socket, channel I
- 19 Flash socket, channel II
- 20 Flash socket, channel II (MAGNOLUX 3600 only)



- 21 Socket lock
- 22 Channel I ON/OFF
- 23 Channel II ON/OFF
- 24 Channel II, 2nd flash ON/OFF (MAGNOLUX 3600 only)
- 25 Channel I / I+II switch
- 26 Interface for LUXREM-R radio receiver

All buttons monitored by LED!

# THE TUBES

## Precision down to the last detail

Plug-in quartz flash tubes have solid-brass screw-mounted contact pins and ceramic bases – precision made for long service life. UV absorption guarantees neutral color rendition.



# MAGNOLUX FLASH UNITS

- + Rugged aluminum/plastic design.
- + With time-tried V-type bayonet mount for wide range of Multiblitz light-forming tools.
- + Plug-in flash tubes up to 4000 Ws, with robust ceramic base.
- + UV absorption for neutral color rendition.
- + With 650 W halogen tubes and pyrex globes. Separate halogen switch.
- + Separate thermal circuit breaker.
- + Improved handgrip, new tripod mount and reflector clamp.
- + Cooling fan.

# THE LINE OF PERFECT STUDIO FLASH GENERATORS



## MAGNOLUX 1200

Ultra-compact and fast, for fashion and people.

## MAGNOLUX 2400

Ideal for general studio work.

## MAGNOLUX 3600

For sophisticated lighting control.

**MAGNOLUX**

- + Symmetric distribution of power over two channels,
- + asymmetric distribution of power due to continuously variable channels,
- + two flash sockets.

- + Asymmetric distribution of power over two channels,
- + each channel continuously variable,
- + three flash sockets, unusually wide control range.



**THE „S“ FLASH:**  
Offering all the benefits of the standard flash.

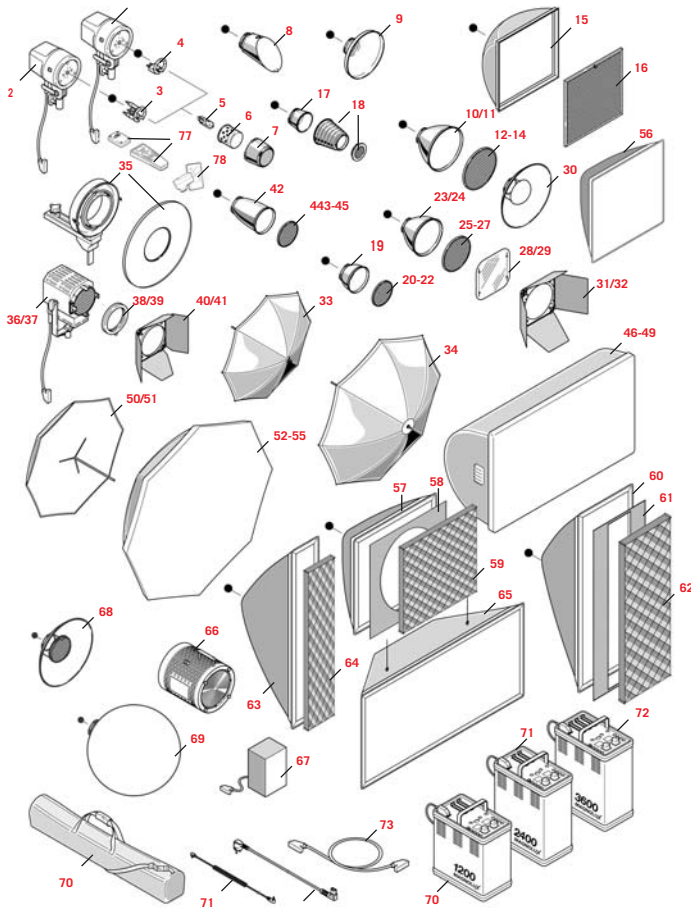
- + With special flash tube up to 4000 Ws for extremely brief flash duration with all Magnolux generators.
- + Top 1/3,500 s with Magnolux 1200.

**MADE IN GERMANY**



# THE MAGNOLUX-SYSTEM

## MULTIBLITZ LIGHTFORMER AND ACCESSORIES.



- 1 MALAX-40
- 2 MALAX-24S
- 3 MAROW-S
- 4 MAREW
- 5 VAJOG-2
- 6 RIKLA
- 7 RIKAP
- 8 RIVER
- 9 RIWEI
- 10 RINOS-2
- 11 RINOW-2
- 12 RIWAN-2S
- 13 RIWAN-2M
- 14 RIWAN-2L
- 15 RIMUL-51
- 16 COMWAL-1
- 17 STUSCH
- 18 RIBUS
- 19 LUNOS
- 20 LUWAN-S
- 21 LUWAN-M
- 22 LUWAN-L
- 23 RINOS-3
- 24 RINOW-3
- 25 RIWAN-3S
- 26 RIWAN-3M
- 27 RIWAN-3L
- 28 RISOF-3
- 29 RISOF-2
- 30 RIWEW
- 31 RISAB-24
- 32 RISAB-34
- 33 VARES
- 34 VAREU
- 35 MARILA-N
- 36 MASTU-40
- 37 MASTU-20
- 38 MAFIL-40
- 39 MAFIL-20
- 40 MATOR-40
- 41 MATOR-20
- 42 RIENG
- 43 RIWANG-S
- 44 RIWANG-M
- 45 RIWANG-L
- 46 WL 10
- 47 WL 15
- 48 WL 20
- 49 WL 30
- 50 RESBO-S
- 51 RESBO-M
- 52 RIFOC-120
- 53 RIFOC-150
- 54 RIFOC-213
- 55 RIFOC-254
- 56 LUFEX-65
- 57 RIFEX-80/110
- 58 RITUR-80/110
- 59 FEXWAN-80/110
- 60 RIREC-60/80
- 61 PROTUR (FOR RIREC-60 ONLY)
- 62 RECWAN-60/80
- 63 RIRIP-30
- 64 RECWAN-30
- 65 MADUL 200
- 66 RASTU
- 67 MABOX-20/30
- 68 RIBEAU
- 69 RIGLOB
- 70 MUBAG-120
- 71 MASYG
- 72 MANET
- 73 MAKUV/MAKIV
- 74 MALUX-12
- 75 MALUX-24
- 76 MALUX-36
- 77 LUXREM-RT/MB-SOFTWARE
- 78 MURAS-RT

## MAGNOLUX-FACTS

- + MAGNOLUX 1200 AND 2400 WITH TWO FLASH SOCKETS EACH, MAGNOLUX 3600 WITH THREE-SOCKETS.
- + EACH FLASH SOCKET WITH SEPARATE ON/OFF SWITCH, PROTECTED AGAINST OPERATING ERRORS BY A MICROSWITCH.
- + HALOGEN MODELING LIGHT UP TO 650 WS, PROPORTIONAL TO FLASH OUTPUT, SEPARATE SWITCH OR 100% HALOGEN LIGHT.
- + OPTICAL AND ACOUSTIC READY SIGNALS.
- + IR PHOTO CELL WITH OFF SWITCH.
- + TWO SYNC TERMINALS.
- + GENERATORS FAN-COOLED FOR HEAVY-DUTY USE.
- + RUGGED HANDGRIP, METAL HOUSING WITH PLASTIC SAFETY EDGES.

Specifications	MAGNOLUX 1200	MAGNOLUX 2400	MAGNOLUX 3600	
Flash power	~J(Ws)	1200	2400	3600
Guide number, ISO 100/21°, RINOS-2 reflector/50°	m	128	180	225
Colour temperature	K	5100K, Constant over entire control range		
Guide f-stop, ISO 100/21°, 1m		128	180	180,6
Control range in 1/10 f-stops	~J(Ws)	1200 - 37	6 f-stops 2400 - 75	7,5 f-stops 3600 - 37
Flash duration, t 0,5 s				
With MALAX-40 flash head	s	1/1000 - 1/2000	1/600 - 1/1500	1/500 - 1/1500
With MALAX-24S flash head	s	1/1600 - 1/3600	1/1000 - 1/ 2700	1/800 - 1/2400
Recycling time, 100% output	s	0.4-0.8	0.5-1.8	0.8-2.8
Flash sockets		2	2	3
Power distribution (Ws)		A 1x 1200 - 75 B 2x < 600 - 37 600 - 37	A 1x 2400 - 150 B 2x < 1200 - 75 1200 - 75	A 1x 3600 - 225 B 1x 2400 - 150 1x 1200 - 75 C 1x 2400 - 150 2x 600 - 37
Halogen modeling light		Proportional to flash output 650 W / 220 - 240 V		
Output controls		2 rotary potentiometer		
Flash triggering		Slave cell, sync cable, open flash button, infrared, radio (RADIOSLAVE, LUXREM RT)		
Voltage applied to sync cable		9 V		
Flash power constancy	%	+/- 1		
Connected load	A/VA (W)	16 / 3700	16 / 3700	16 / 3700
Electrical safety		Radio-noise suppression CE, DIN IEC 491, VDE 0882		
Dimensions of generator (Height including bracket)	(mm)	180 x 270 x 330	180 x 270 x 395	
Weight of generator	kg	6.4	8.2	9.5
Weight of flash head	kg		2.1	

Tolerances of specifications and components conforming to DIN and IEC standards | Subject to change without notice

## YOUR DISTRIBUTOR:

# Multiblitz

FERDINAND - PORSCHE - STR. 19  
D-51149 KÖLN | GERMANY

FO: +49 2203 - 93 96 35  
FAX: +49 2203 - 93 96 49

E-MAIL: EXPORT@MULTIBLITZ.DE  
WWW.MULTIBLITZ.DE

# MAGNOLUX

1200 | 2400 | 3600